



**SonFlow**

# Plate Heat Exchanger SF55 Series

SF55, SF56 & SF57



**SonFlow offers a wide range of Plate Heat Exchangers and is the ideal choice suitable for a wide variety of applications across numerous markets segments. SonFlow Plate Heat Exchanger SF55 series will cover many duties in a single pass solution.**

## Typical applications:

- HVAC
- Geothermal
- Marine
- Food & beverages
- Industrial & chemical market
- Mining
- Sugar industry
- Electronics

- Gentle product handling
- Design pressure up to 25 bar
- Operating temperature: up to 180° C
- Leak chamber
- Fixed bolt head
- Lifting lug
- Lining
- Lock washer

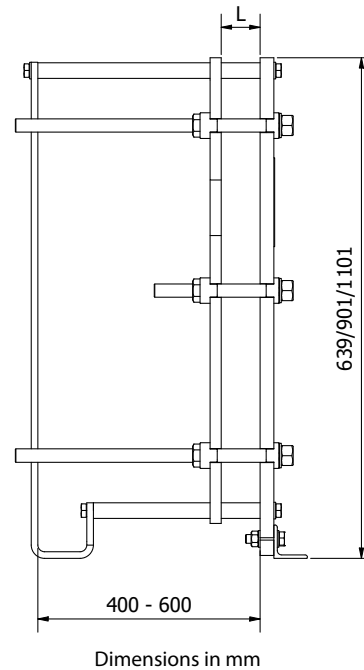
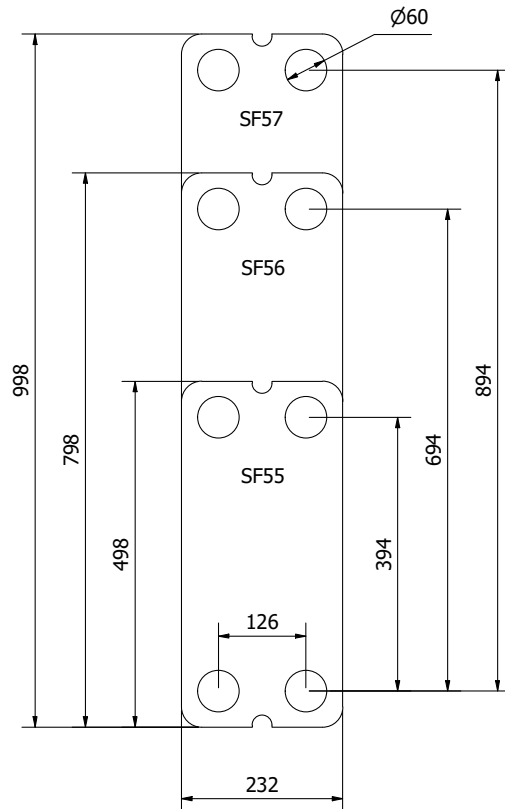
## Features:

Every detail is carefully designed to ensure optimal performance, reduced maintenance costs and decreased downtime:

- Compact design
- High flexibility
- Lock gasket system

## Benefits:

- Lower operating costs
- Cost-effective
- Easy assembly
- Increased energy efficiency
- Easy cleaning
- Dead spots, that cause corrosion and fouling are eliminated



### Design pressure:

- Painted frames: 1.6/2.5 MPa (232/362 PSI)

### Construction standards:

- EN13445 (PED 2014/68/EU)
- ASME sec VIII, Div. 1

### Frame:

- Painted frame, RAL 5010 (available in other colours)
- Stainless steel frame

### Connections:

- DN 50/2" flange in carbon steel, rubber lined or clad with AISI 316 or titanium
- DN 50/2" dairy pipes or unions
- According to all known standards

### Plate material:

- AISI 304/316 and titanium
- Other materials available on request

### Gaskets:

- Click on gasket – a glue less system for sealing
- Materials: NBR, EPDM and Viton
- Other materials available on request

### Accessories:

- Drip tray
- Emergency spares
- Insulation jackets
- Safety cover